

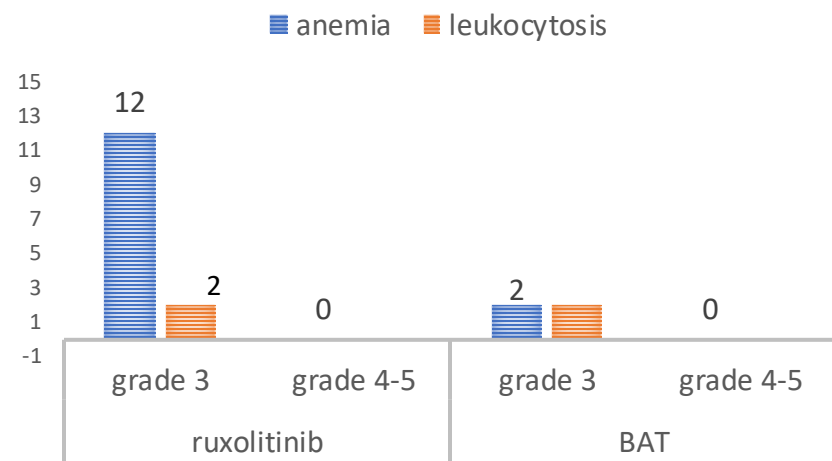
Polycythemia Vera

INTOLERANCE TO RUXOLITINIB IN POLYCYTHEMIA VERA

Alessandro Maria **Vannucchi**, Paola **Guglielmelli**, Fabrizio **Pane**,
Francesco **Passamonti**, Valerio **De Stefano**, Massimo **Breccia**, Elisabetta **Abruzzese**
Francesca **Palandri**, Tiziano **Barbui**

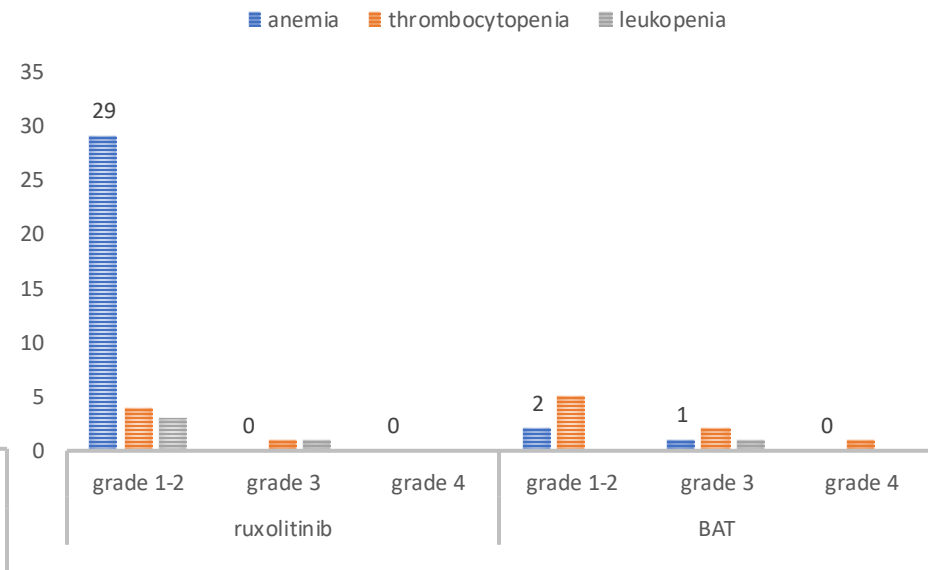
Hematological toxicity of ruxolitinib in Polycythemia Vera

RESPONSE study



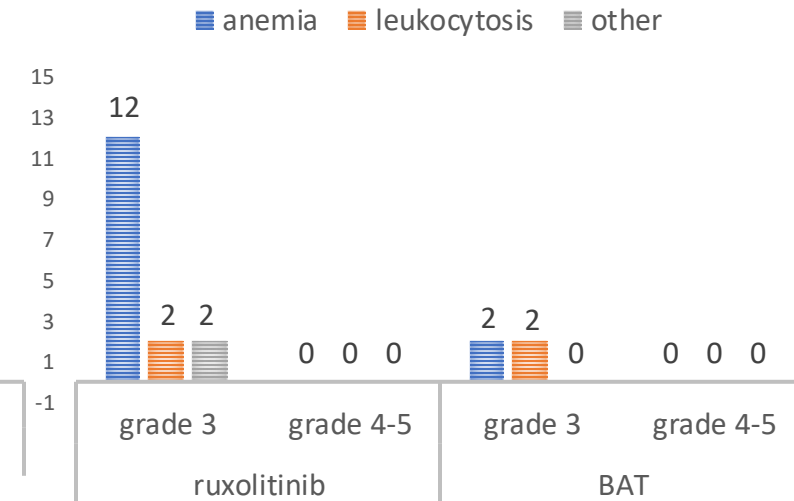
Exposure-adjusted rates (per 100 patient-years)

RESPONSE-2 study



Exposure-adjusted rates (per 100 patient-years)

MAJIC study



Experience by at least 10% of patients

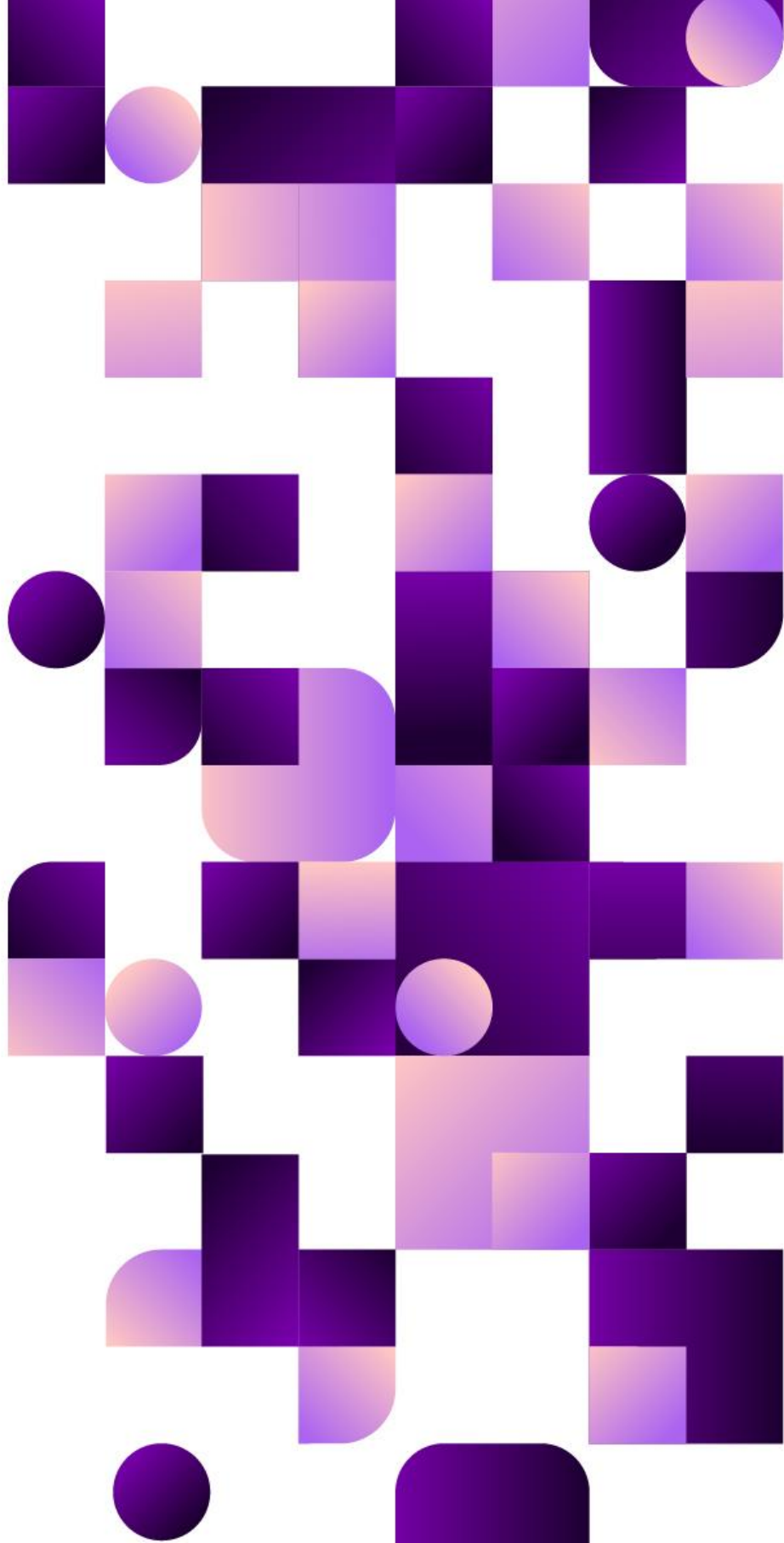


Non-Hematological toxicity of ruxolitinib in Polycythemia Vera

	Response study				Response-2 study			
	Ruxolitinib		BAT		Ruxolitinib		BAT	
	Grade 1-2	Grade 3-4	Grade 1-2	Grade 3-4	Grade 1-2	Grade 3-4	Grade 1-2	Grade 3-4
Infections	15.4%	3.5%	55.7%	4.1%	12.6%	2.1%	30%	3.8%
Weight gain	5.4%	0.7%	1.4%	0%	5.1%	0.6%	1.9%	0%
Malignant tumours	nr	nr	nr	nr	2.4%	2.1%	1.9%	5.6%
Herpes zoster	4.2%	0.5%	0%	0%	3%	0.9%	0%	0%
Non-melanoma skin cancers	0.2%	2.4%	0%	0%	1.5%	1.2%	1.9%	0%
Thromboembolic events	0%	0%	0%	1.4%	0.3%	1.2%	3.7%	0%

nr: not reported





Il presente documento è il prodotto finale del progetto *Clinical Assessment of resistance and Intolerance to Hydroxyurea as Criteria for Second-line Treatment in patients with Polycythemia Vera*, condotto nel corso del 2023 e 2024 dal Working Party GIMEMA sulle Neoplasie Mieloproliferative Croniche.

EXPERT PANEL

Alessandro Maria **Vannucchi** (coordinatore)

Paola **Guglielmelli** (referente di progetto)

Fabrizio **Pane**

Francesco **Passamonti**

Valerio **De Stefano**

Massimo **Breccia**

Elisabetta **Abruzzese**

Francesca **Palandri**

Tiziano **Barbui**

Questo progetto è stato realizzato con il supporto non condizionante di **AOP Health**.

